



HLA学院

HLA GAKUIN



At HLA GAKUIN, in order to improve the Japanese language skills of our international students, we will deepen their understanding of the culture and customs that lie behind the Japanese language and will place importance on their cross-cultural encounters in Japan. We value the encounter with different cultures in Japan so that students can deepen their understanding of the culture and customs behind the Japanese language and further cultivate their communication skills. We will do our best to support international students in achieving their goals.

校長メッセージ MESSAGE FROM THE PRINCIPAL

The purpose of our university is to support students from overseas who wish to study and play an active role in Japan in the future by providing them with specialized knowledge. We also hope to contribute to the development of multicultural conviviality by fostering human resources who can play an active role internationally from an equal and fair perspective, with a broad perspective and practical ability in today's global age.

Hiroshima Prefecture, where our school is located, is a city of peace that continues to appeal to the world for lasting peace, and is also known internationally. The prefecture is also known internationally. The prefecture is active in various international exchange activities, and is a comfortable place for international students to live. We will do our best to help students acquire the autonomy and tenacity to survive in today's international society and realize their dreams.



Principal TAEKO KONDOH

教育課程 / 入学時期 COURSE

course	April	2-Year Course
	October	1.5-Year Course

学習内容 LEARNING

This is a well-balanced preparatory course to develop the four skills of reading, speaking, writing, and listening for those who wish to enter Japanese universities and vocational schools.

STEP UP !

Beginner/Intermediate

Acquire basic Japanese and the Japanese necessary for daily life. To be able to communicate in daily life

Intermediate

Develop the ability to deal with somewhat complex situations and understand coherent discourse and writing

Advanced

Acquire Japanese language skills for a wide range of situations. Acquire the skills necessary to study at Japanese institutions of higher education, such as giving presentations and writing papers and reports in Japanese



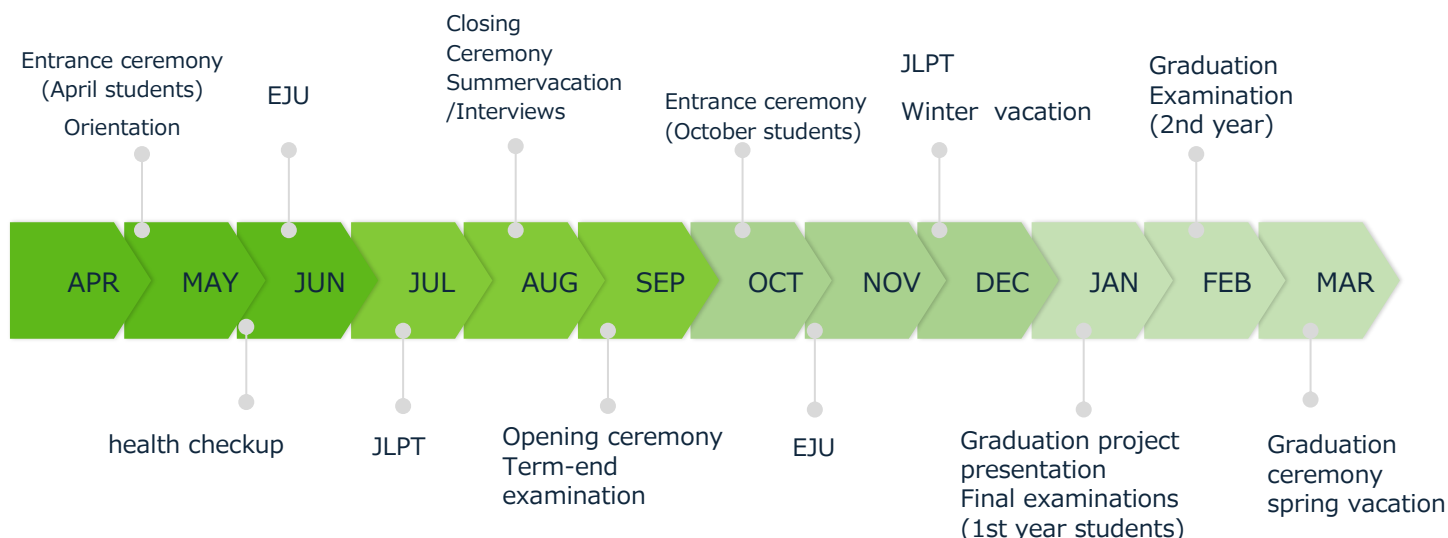
Example of teaching materials used

* Classes are determined based on the results of a written test and interview test at the time of enrollment.

学校行事 SCHOOL EVENTS

We offer a variety of school events for students to learn, enjoy, and grow so that their time spent at HLA GAKUIN will be a valuable time for the rest of their lives.

We also provide opportunities for students to experience Japanese culture through local events.



その他の行事 Other Events

Cherry blossom viewing / Japanese cultural experience / Tanabata Star Festival / Disaster drill / Traffic safety class / Community event participation / Field trip, etc.



Japanese cultural experience (Tanabata Festival, tea ceremony experience)



Tour of fire station



Field trip (Miyajima)



Community clean-up activities

校内設備 SCHOOL FACILITIES



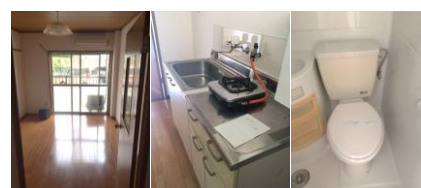
Classroom



Library room

学生寮 STUDENT DORMITORY

To ensure a safe and comfortable study-abroad experience, our dormitories are equipped with a refrigerator, washing machine, microwave oven, stove, and other appliances. WIFI is also available.



Approximate Cost of Living in Hiroshima Prefecture

Monthly cost of living (not including tuition): approx. 70,000-100,000 yen.
The cost of living in Hiroshima is lower than in large metropolitan areas.

Airport pick-up for coming to Japan

Pickup and drop-off fee 3,000 yen per person

*In addition to Hiroshima Airport, pickup and drop-off at JR Hiroshima Station, Higashi-Hiroshima Station, Saijo Station, etc. can be discussed.

学生サポート STUDENT SUPPORT

Our experienced faculty and staff are ready to respond to any questions or concerns that students may have and provide advice. We work closely with each student, providing consultation on procedures and daily life when coming to Japan, and support until entering higher education (selection of schools of interest, application preparation, and interview practice).



Scholarship Program

HLA GAKUIN has established its own scholarship program to support students.

This system supports current students who are academically excellent and highly motivated.

The scholarship is awarded to students who are selected by the school based on their grades, attendance, and attitude toward learning, and is awarded 50,000 yen per semester.

アクセス ACCESS&MAP

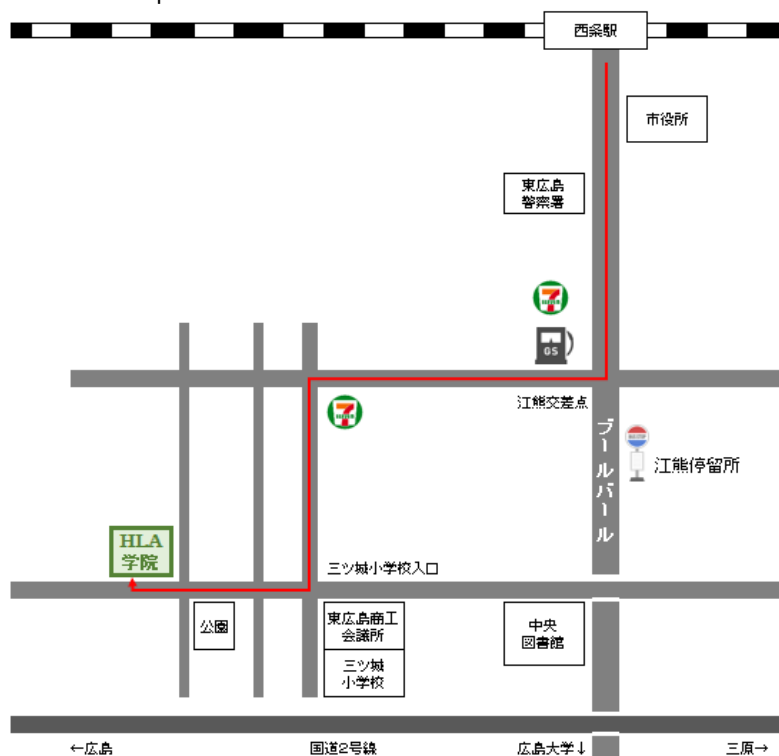
Walk: 20 minutes from Saijo Station

Bus: Saijo Station, Bus Stop No. 3

(bound for Hiroshima University)

5 minutes walk from "Eguma" bus stop

Located approximately 20 minutes by car from Hiroshima Airport.



Higashi-Hiroshima City has nature close by, including rivers, forests, mountains, and the sea. It is also an academic city with four universities where many students study.

It is a city that is developing and growing toward the future with various research institutes and companies, and is conveniently located near expressways, bullet trains, and airports.

HLA Gakuin HLA GAKUIN

〒739-0025 7-17-8 Saijo Chuo, Higashihiroshima City,
Hiroshima Prefecture

TEL : 082-437-5806 FAX : 082-437-5807

E-mail info@hlag.co.jp